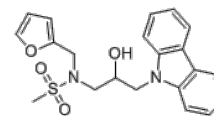


Product Name : KL001
Cat. No. : PC-36022
CAS No. : 309928-48-1
Molecular Formula : C₂₁H₂₂N₂O₄S
Molecular Weight : 398.477
Target : Deubiquitinase (DUB)
Solubility : 10 mM in DMSO



Biological Activity

KL001 (KL-001) is a small molecule that specifically interacts with **cryptochrome (CRY)** and small molecule modulator of the circadian clock.

KL001 prevents **SCFFBXL3**-mediated ubiquitination and degradation of CRY, resulting in lengthening of the circadian period, interacts directly with CRY1 and CRY2 and stabilizes CRY proteins.

KL001-mediated CRY stabilization inhibited glucagon-induced gluconeogenesis in primary hepatocytes.

KL001 is the first-in-class cryptochrome-targeting circadian modulator and substrate-targeting ubiquitination antagonist.

References

Hirota T, et al. **Science**. 2012 Aug 31;337(6098):1094-7.

Nangle S, et al. **Cell Res**. 2013 Dec;23(12):1417-9.

St John PC, et al. **Proc Natl Acad Sci U S A**. 2014 Feb 4;111(5):2040-5.

Oshima T, et al. **Angew Chem Int Ed Engl**. 2015 Jun 8;54(24):7193-7.

Caution: Product has not been fully validated for medical applications. Lab Use Only!

E-mail: tech@probechem.com